

ENSEMBLE POLICIES
ATTENDANCE, GRADING, AND CONCERT ATTIRE

Brass Band

Spring 2019

David Childs & Raquel Rodriguez, conductor
Danny Brock, TA/asst. conductor

The goal of our policy statement is to preserve the quality of the music making experience for all involved. Early communication is the best way to handle any problems that may arise.

ATTENDANCE

1. Musicians **CANNOT BE EXCUSED** from any rehearsals or performances.
2. Events that are **BEYOND YOUR CONTROL**, such as serious illness or family emergencies will be considered on a case-by-case basis and will be handled by the conductor of the ensemble.
3. In the event of an emergency absence, **DIRECT** communication with the conductor is essential upon return. If at all possible, please call in advance of the absence.
4. In case of absence, an explanation should be offered well in advance of the next rehearsal. Please make an appointment to speak with the conductor personally at a time other than just before or just after a rehearsal. Once again, communication is the best way to handle attendance issues.

THE WIND STUDIES PHONE NUMBER IS: (940) 565-3737

EMAIL ADDRESS: David.Childs2@unt.edu Raquel.Rodriguez@unt.edu

GRADING

Student grades are based on the following:

1. Preparation, performance, and positive contribution
2. Attendance at rehearsals, sectionals, concerts, and performances
3. Listening assignments

Grading Scale:	Absences	=	Grade
	0	=	A
	1	=	B
	2	=	C
	3	=	D
	4	=	F

Note:

- Absence from dress rehearsal or performance will also result in a failing grade. Students who receive a failing grade must confer with the conductor to determine future ensemble status.
- Sectional attendance is required.

TARDY

Musicians should be in their seats five minutes prior to tuning. Two tardies equal one absence. It is recommended that students keep open the hour prior to their scheduled rehearsal time to minimize the possibility of being late.

DRESS REHEARSALS & REQUIRED PERFORMANCES

Dress Rehearsal	Sunday, February 17, 2019	7:00-9:00 pm	Winspear Hall/MPAC
Concert	Monday, February 18, 2019	7:30 pm	Winspear Hall/MPAC
Dress Rehearsal	Tuesday, April 16, 2019	6:30-9:30 pm	Winspear Hall/MPAC
Concert	Thursday, April 18, 2019	7:30 pm	Winspear Hall/MPAC

Performers are to arrive at least **thirty minutes prior** to the scheduled beginning of each concert and sign-in. The sign-in list will be checked fifteen minutes prior to the downbeat of each concert. It is also recommended that you not book other rehearsals or engagements between the dress rehearsal and the concert during the day of a performance.

CONCERT ATTENDANCE

To enhance and expand the musical education of the musicians in the ensemble, music majors are required by the College of Music to attend fifteen concerts or recitals each semester. The Wind Studies Area requires that **ALL ENSEMBLE MEMBERS** use the performances listed below as partial fulfillment of this obligation.

AN ABSENCE WILL RESULT IN THE LOSS OF ONE LETTER GRADE PER CONCERT MISSED.

REQUIRED CONCERTS

Symphonic Band	Tuesday, February 5, 2019	7:30 pm	Winspear Hall/MPAC
Wind Symphony	Tuesday, February 12, 2019	7:30 pm	Winspear Hall/MPAC
Wind Ensemble	Tuesday, February 19, 2019	7:30 pm	Winspear Hall/MPAC
University/Concert Band	Wednesday, February 20, 2019	7:30 pm	Winspear Hall/MPAC
US Navy Band	Tuesday, March 5, 2019	7:30 pm	Winspear Hall/MPAC
Symphonic Band	Thursday, March 21, 2019	7:30 pm	Winspear Hall/MPAC
Wind Symphony	Thursday, March 28, 2019	7:30 pm	Winspear Hall/MPAC
University/Concert Band	Monday, April 8, 2019	7:30 pm	Winspear Hall/MPAC
Wind Ensemble	Thursday, April 11, 2019	7:30 pm	Winspear Hall/MPAC
Wind Symphony	Thursday, April 25, 2019	7:30 pm	Winspear Hall/MPAC
Symphonic Band	Saturday, April 27, 2019	7:30 pm	Winspear Hall/MPAC

REHEARSAL “BUMP” SCHEDULE – rehearsals that will take place somewhere other than the MU232

Wednesday, February 6	Rehearsal moved to Music Building 230
Wednesday, March 6	Rehearsal moved to Music Building 230
Monday, April 1	Rehearsal moved to Music Building 230

DOCUMENTING CONCERT ATTENDANCE

Music Majors should swipe their student ID in the lobby area **AT LEAST 15 MINUTES PRIOR TO THE BEGINNING OF THE CONCERT (THE TABLE WILL BE CLOSED 5 MINUTES PRIOR TO THE CONCERT – YOU WILL NOT BE ABLE TO CHECK IN AFTER THIS TIME.)** Following the conclusion of the concert, you will need to swipe your ID again in the lobby. A list of absences will be emailed to students at the end of the semester. Students must bring any corrections for consideration to the Wind Studies office by the first day of Finals Week. Corrections will not be considered after this time.

SHARED CONCERTS

If you share a concert with another ensemble, you are required to be in attendance for the entire concert.

SHORT-TERM LEAVE OF ABSENCE

Requests for excused absences for the purposes of auditions, contests, interviews, and other special professional opportunities are to be made with the ensemble conductor and are subject to approval by the Director of Wind Studies. The amount of flexibility we have in accommodating such requests is directly related to the amount of advanced notice given.

OUTSIDE COMMITMENTS

As a member of the ensemble, we assume that your primary responsibility is to the announced schedule. Outside work and performance opportunities are considered to be the business of the student but should not interfere with College of Music obligations. Please consider this document a contract of your commitments to the College of Music and the Wind Studies Area for the semester.

CONCERT DRESS

MEN: Full dress black: black formal trousers, black tuxedo jacket, white dress shirt, black bow tie, optional black cummerbund, black socks and black shoes.

WOMEN: Option 1:
Black full-length, long-sleeved dress OR black full-length skirt and black long-sleeved blouse/jacket (either version should have **covered shoulders, arms, and torso**).* Black close-toed shoes. Both clothing and shoes should be formal rather than casual.

Option 2:

Black loose-fitting pants with black long-sleeved blouse/jacket (**covered shoulders, arms, and torso**).* Black close-toed shoes. Both clothing and shoes should be formal rather than casual.

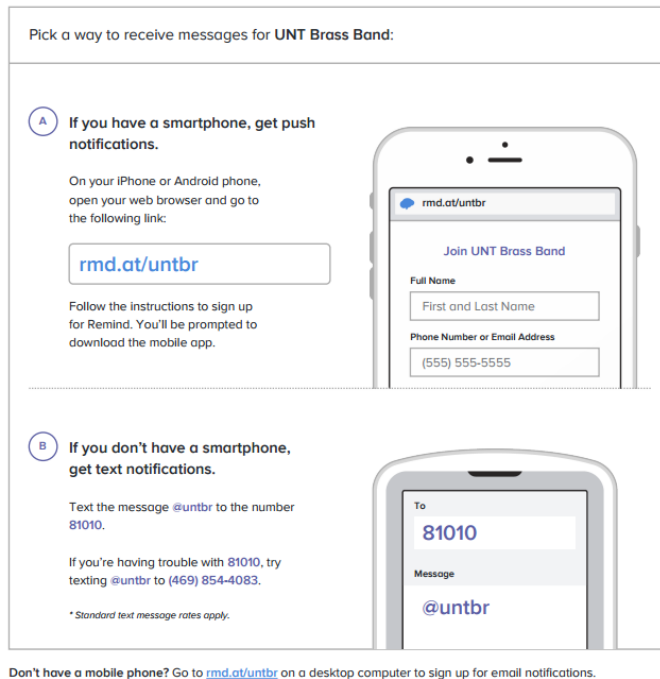
*A very small, pure white trim collar/cuffs and tasteful, conservative jewelry is permissible.

CELL PHONES / PAGERS

NO CELL PHONES ARE ALLOWED IN REHEARSALS OR PERFORMANCES. Cell phones will be involuntarily donated to Denton County Friends of the Family. Be sure you have your cell phone data backed up in a different location.

“REMIND” TEXTING SERVICE

REMIND will be used to keep all members of this ensemble updated (rehearsal schedule changes, concert information, etc.). To sign up for these updates (strongly encouraged), text @untbr to the number 81010.



STUDENT BEHAVIOR

Student behavior that interferes with an instructor’s ability to conduct a class or other students' opportunity to learn is unacceptable and disruptive and will not be tolerated in any instructional forum at UNT. Students engaging in unacceptable behavior will be directed to leave the classroom and the instructor may refer the student to the Dean of Students to consider whether the student's conduct violated the Code of Student Conduct. The university's expectations for student conduct apply to all instructional forums, including university and electronic classroom, labs, discussion groups, field trips, etc. Link: <https://deanofstudents.unt.edu/conduct>

ACCESS TO INFORMATION – EAGLE CONNECT

Your access point for business and academic services at UNT occurs at my.unt.edu. All official communication from the university will be delivered to your Eagle Connect account. For more information, please visit the website that explains Eagle Connect. LINK: eagleconnect.unt.edu/

ODA STATEMENT

The University of North Texas makes reasonable academic accommodation for students with disabilities. Students seeking accommodation must first register with the Office of Disability Accommodation (ODA) to verify their eligibility. If a disability is verified, the ODA will provide you with an accommodation letter to be delivered to faculty to begin a private discussion regarding your specific needs in a course. You may request accommodations at any time, however, ODA notices of accommodation should be provided as early as possible in the semester to avoid any delay in implementation. Note that students must obtain a new letter of accommodation for every semester and must meet with each faculty member prior to implementation in each class. For additional information see the Office of Disability Accommodation. LINK: disability.unt.edu. (Phone: (940) 565-4323)

FINANCIAL AID AND SATISFACTORY ACADEMIC PROGRESS

Undergraduates

A student must maintain Satisfactory Academic Progress (SAP) to continue to receive financial aid. Students must maintain a minimum 2.0 cumulative GPA in addition to successfully completing a required number of credit hours based on total registered hours per term. Students cannot exceed attempted credit hours above 150% of their required degree plan. If a student does not maintain the required standards, the student may lose their financial aid eligibility. Students holding music scholarships must maintain a minimum 2.5 overall cumulative GPA and 3.0 cumulative GPA in music courses.

If at any point you consider dropping this or any other course, please be advised that the decision to do so may have the potential to affect your current and future financial aid eligibility. It is recommended that you to schedule a meeting with an academic advisor in your college or visit the Student Financial Aid and Scholarships office to discuss dropping a course being doing so.

LINK: <http://financialaid.unt.edu/sap>

Graduates

A student must maintain Satisfactory Academic Progress (SAP) to continue to receive financial aid. Students must maintain a minimum 3.0 cumulative GPA in addition to successfully completing a required number of credit hours based on total registered hours per term. Music scholarships require a 3.5 cumulative GPA. Students cannot exceed maximum timeframes established based on the published length of the graduate program. If a student does not maintain the required standards, the student may lose their financial aid eligibility.

If at any point you consider dropping this or any other course, please be advised that the decision to do so may have the potential to affect your current and future financial aid eligibility. It is recommended you schedule a meeting with an academic advisor in your college, an advisor in UNT-International or visit the Student Financial Aid and Scholarships office to discuss dropping a course.

LINK: <http://financialaid.unt.edu/sap>

ACADEMIC INTEGRITY

<http://facultysuccess.unt.edu/academic-integrity>

STUDENT BEHAVIOR

<https://deanofstudents.unt.edu/conduct>

ACCESS TO INFORMATION – EAGLE CONNECT

www.eagleconnect.unt.edu/

ODA STATEMENT

www.disability.unt.edu.

Phone: (940) 565-4323

2018-2019 Semester Academic Schedule (with Add/Drop Dates)

Link: <http://catalog.unt.edu/content.php?catoid=20&navoid=2120>

Academic Calendar at a Glance, 2018-2019

Link: <https://www.unt.edu/catalogs/2018-19/calendar>

Final Exam Schedule

Link: <https://registrar.unt.edu/exams/final-exam-schedule/spring>

FINANCIAL AID AND SATISFACTORY ACADEMIC PROGRESS

Graduates: <http://financialaid.unt.edu/sap>

RETENTION OF STUDENT RECORDS

<http://ferpa.unt.edu/>

RESPONDING TO STUDENTS IN DISTRESS: UNT CARE TEAM

<http://studentaffairs.unt.edu/care>